

STUDS				
NO.	DESCRIPTION	QUANTITY	DIMENSION	UNPUNCHED
ST-1	6X1.625 16 ga. DELTA STUD	22	VARIABLES	13'-2" TO 13'-6" & 27'-8" TO 28'-0" & 40'-4" TO 40'-11" & LAST 5'-0"
ST-2	6X1.625 16 ga. DELTA STUD	6	17'-5 7/8"	13'-2" TO 13'-6"
ST-3	6X1.625 16 ga. DELTA STUD	2	6'-10 1/4"	-
ST-4	6X1.625 16 ga. DELTA STUD	7	31'-10 1/4"	13'-2" TO 13'-6" & 27'-8" TO 28'-0"
ST-5	6X1.625 16 ga. DELTA STUD	2	13'-6"	-
ST-6	6X1.625 16 ga. DELTA STUD	8	14'-10"	-
ST-7	6X1.625 16 ga. DELTA STUD	8	13'-0"	-
ST-8	6X2 16 ga. DELTA STUD	2	3'-4"	-
ST-9	6X2 16 ga. DELTA STUD	10	6'-0"	-
ST-10	6X1.625 16 ga. DELTA STUD	3	6'-0"	-

MISCELLANEOUS				
NAME	DESCRIPTION	QUANTITY	LOCATION	
2X2-14	L 2X2 14 ga. X 1'-3" W/ (2) #12TEK	22	EACH STUD	
SLB600	TSN VERTICLIP SLB W/ (3) #12 REPAIR	102	EACH STUD	
BRIDGING	6X1.25 16 ga. TRACK X0'-8" @ 4'-0" O.C.	14 ROWS		
B-CLIP	BRIDGE CLIP	14X22 ±	1 @ EACH STUD	
O-CLIP	OPENING CLIP	33	OPENING	
L-CLIP	3X3 16 ga. X0'-5"	2	BTM. OF JAMB	

FASTENERS				
NAME	DESCRIPTION	QUANTITY	LOCATION	
TEK-1	#10 TEK	412	STUD TO TRACK	
TEK-2	#12 TEK	350	SLB & 2X2-14	
TEK-3	#12 TEK	198	OPENINGS (6 PER CLIP)	
TEK-4	#10 TEK	14X22 ±	B-CLIP	
TEK-5	#12 TEK	132	REPAIR (6 EACH)	
TEK-6	#12 TEK	6	L-CLIP	
PAF-1	HILTI X-U 47 @ 12" O.C.	43	TRACK TO FDN	
PAF-2	HILTI X-U 16	248	SLB & 2X2-14	
PAF-3	HILTI X-U 16 @ 12" O.C.	0	DEFLECTION TRACK	
PAF-4	HILTI X-U 47	4	L-CLIP	

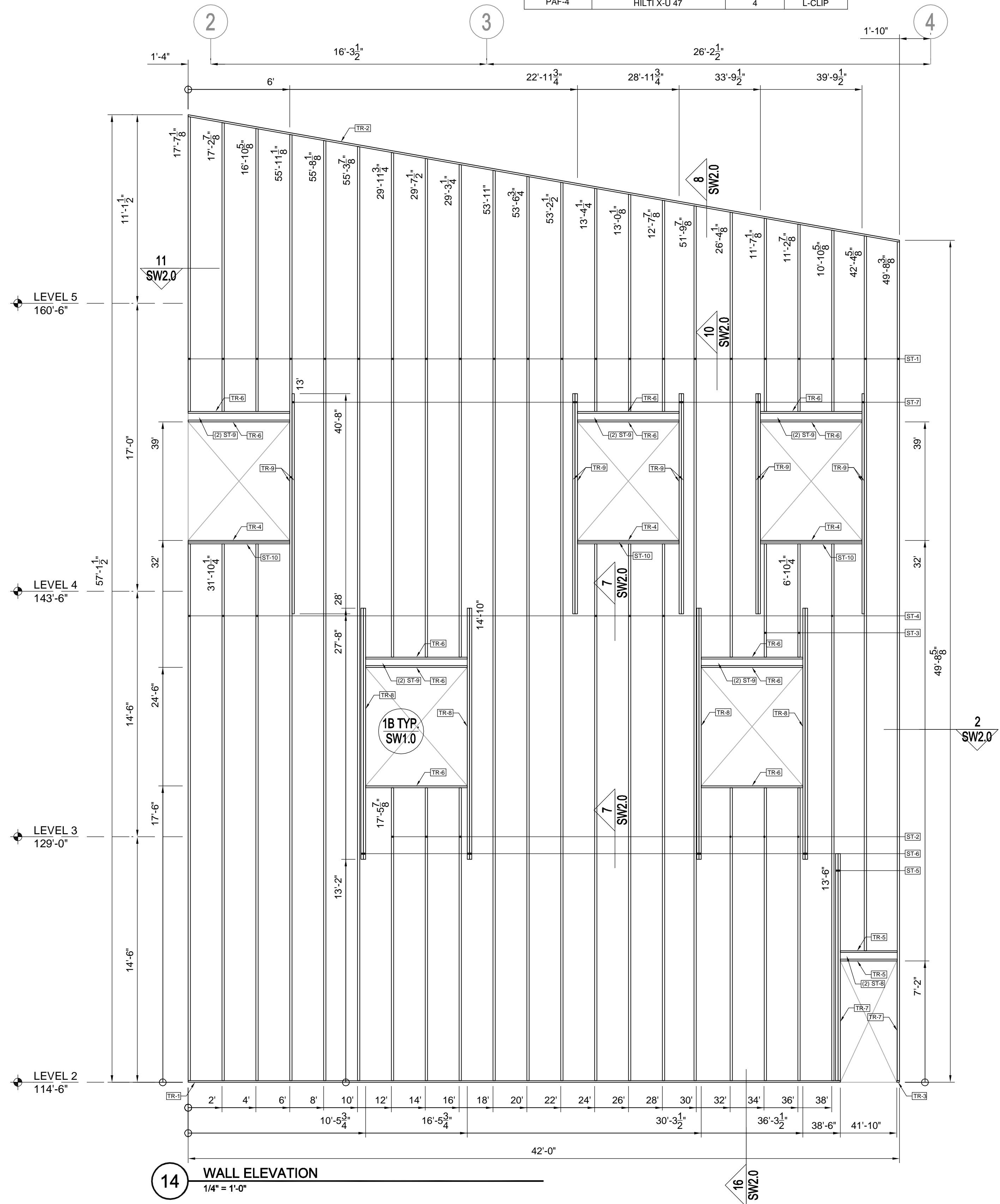
TRACKS				
NO.	DESCRIPTION	QUANTITY	DIMENSION	
TR-1	6X1.25 18 ga. TRACK	1	38'-6"	
TR-2	6X1.25 18 ga. TRACK	1	42'-7 3/4"	
TR-3	6X1.25 18 ga. TRACK	1	0'-2"	
TR-4	6X2 16 ga. TRACK	3	6'-0"	
TR-5	6X1.25 16 ga. TRACK	2	3'-4"	
TR-6	6X1.25 16 ga. TRACK	12	6'-0"	
TR-7	6X1.25 16 ga. TRACK	2	13'-6"	
TR-8	6X1.25 16 ga. TRACK	4	14'-10"	
TR-9	6X1.25 16 ga. TRACK	10	13'-0"	

STUDS				
NO.	DESCRIPTION	QUANTITY	DIMENSION	UNPUNCHED
ST-1	6X1.625 16 ga. DELTA STUD	24	VARIABLES	13'-2" TO 13'-6" & 27'-8" TO 28'-0" & 40'-4" TO 40'-11" & LAST 5'-0"
ST-2	6X1.625 16 ga. DELTA STUD	6	17'-5 7/8"	13'-2" TO 13'-6"
ST-3	6X1.625 16 ga. DELTA STUD	2	6'-10 1/4"	-
ST-4	6X1.625 16 ga. DELTA STUD	4	31'-10 1/4"	13'-2" TO 13'-6" & 27'-8" TO 28'-0"
ST-5	6X1.625 16 ga. DELTA STUD	6	14'-10"	-
ST-6	6X1.625 16 ga. DELTA STUD	2	27'-6"	-
ST-7	6X1.625 16 ga. DELTA STUD	5	13'-0"	-
ST-8	6X2 16 ga. DELTA STUD	6	6'-0"	-
ST-9	6X2 16 ga. DELTA STUD	2	2'-8"	-
ST-10	6X2 16 ga. DELTA STUD	2	3'-1 1/2"	-
ST-11	6X1.625 16 ga. DELTA STUD	1	3'-1 1/2"	-
ST-12	6X1.625 16 ga. DELTA STUD	1	2'-8"	-
ST-13	6X1.625 16 ga. DELTA STUD	1	6'-0"	-

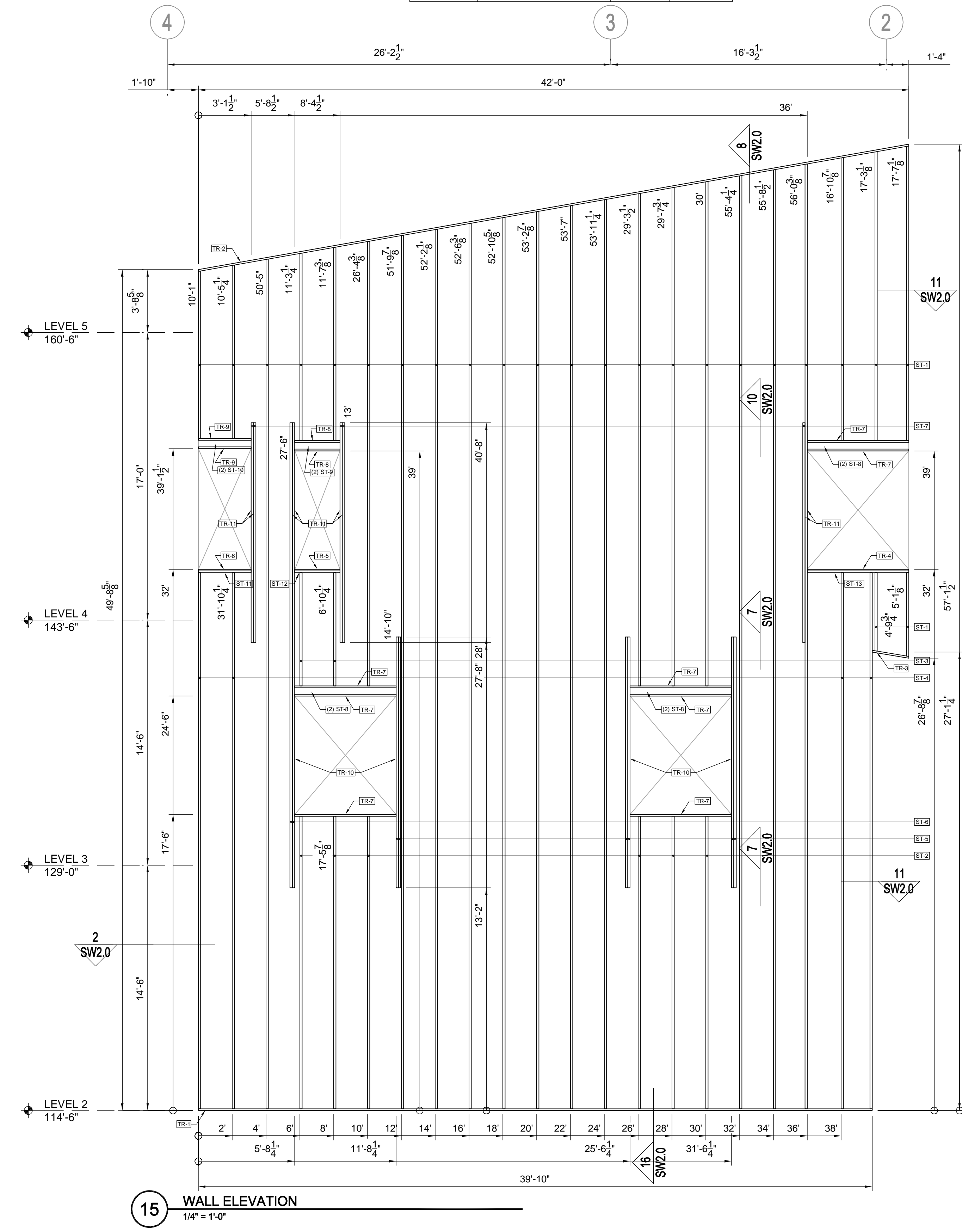
TRACKS				
NO.	DESCRIPTION	QUANTITY	DIMENSION	
TR-1	6X1.25 18 ga. TRACK	1	39'-10"	
TR-2	6X1.25 18 ga. TRACK	1	42'-7 3/4"	
TR-3	6X1.25 18 ga. TRACK	1	2'-2 3/8"	
TR-4	6X2 16 ga. TRACK	1	6'-0"	
TR-5	6X1.25 18 ga. TRACK	1	2'-8"	
TR-6	6X1.25 18 ga. TRACK	1	3'-1 1/2"	
TR-7	6X1.25 16 ga. TRACK	8	6'-0"	
TR-8	6X1.25 16 ga. TRACK	2	2'-8"	
TR-9	6X1.25 16 ga. TRACK	2	3'-1 1/2"	
TR-10	6X1.25 16 ga. TRACK	4	14'-10"	
TR-11	6X1.25 16 ga. TRACK	8	13'-0"	

MISCELLANEOUS				
NAME	DESCRIPTION	QUANTITY	LOCATION	
2X2-14	L 2X2 14 ga. X 1'-3" W/ (2) #12TEK	22	EACH STUD	
SLB600	TSN VERTICLIP SLB W/ (3) #12 REPAIR	96	EACH STUD	
BRIDGING	6X1.25 16 ga. TRACK X0'-8" @ 4'-0" O.C.	11		
B-CLIP	BRIDGE CLIP	14X22 ±	1 @ EACH STUD	
O-CLIP	OPENING CLIP	28	OPENING	
L-CLIP	3X3 16 ga. X0'-5"	0	BTM. OF JAMB	

FASTENERS				
NAME	DESCRIPTION	QUANTITY	LOCATION	
TEK-1	#10 TEK	240	STUD TO TRACK	
TEK-2	#12 TEK	332	SLB & 2X2-14	
TEK-3	#12 TEK	168	OPENINGS (6 PER CLIP)	
TEK-4	#10 TEK	14X22 ±	B-CLIP	
TEK-5	#12 TEK	66	REPAIR (6 EACH)	
PAF-1	HILTI X-U 47 @ 12" O.C.	41	TRACK TO FDN	
PAF-2	HILTI X-U 16	236	SLB & 2X2-14	
PAF-3	HILTI X-U 16 @ 12" O.C.	0	DEFLECTION TRACK	



14 WALL ELEVATION  
1/4" = 1'-0"



15 WALL ELEVATION  
1/4" = 1'-0"

6001 W. WILLIAM CANNON  
BUILDING 2, SUITE 203-C  
AUSTIN, TX 78749  
(512) 301-3389 (o)  
(512) 301-3348 (f)

TEXAS  
DESIGN  
INTERESTS, LLC  
AUSTIN • HOUSTON

COMMERCIAL/RESIDENTIAL - CIVIL & STRUCTURAL ENGINEERING

GOLDEN, CO

WALL ELEVATION

PROJECT #  
499-100

DATE  
10/01/09

SHEET  
SW4.8