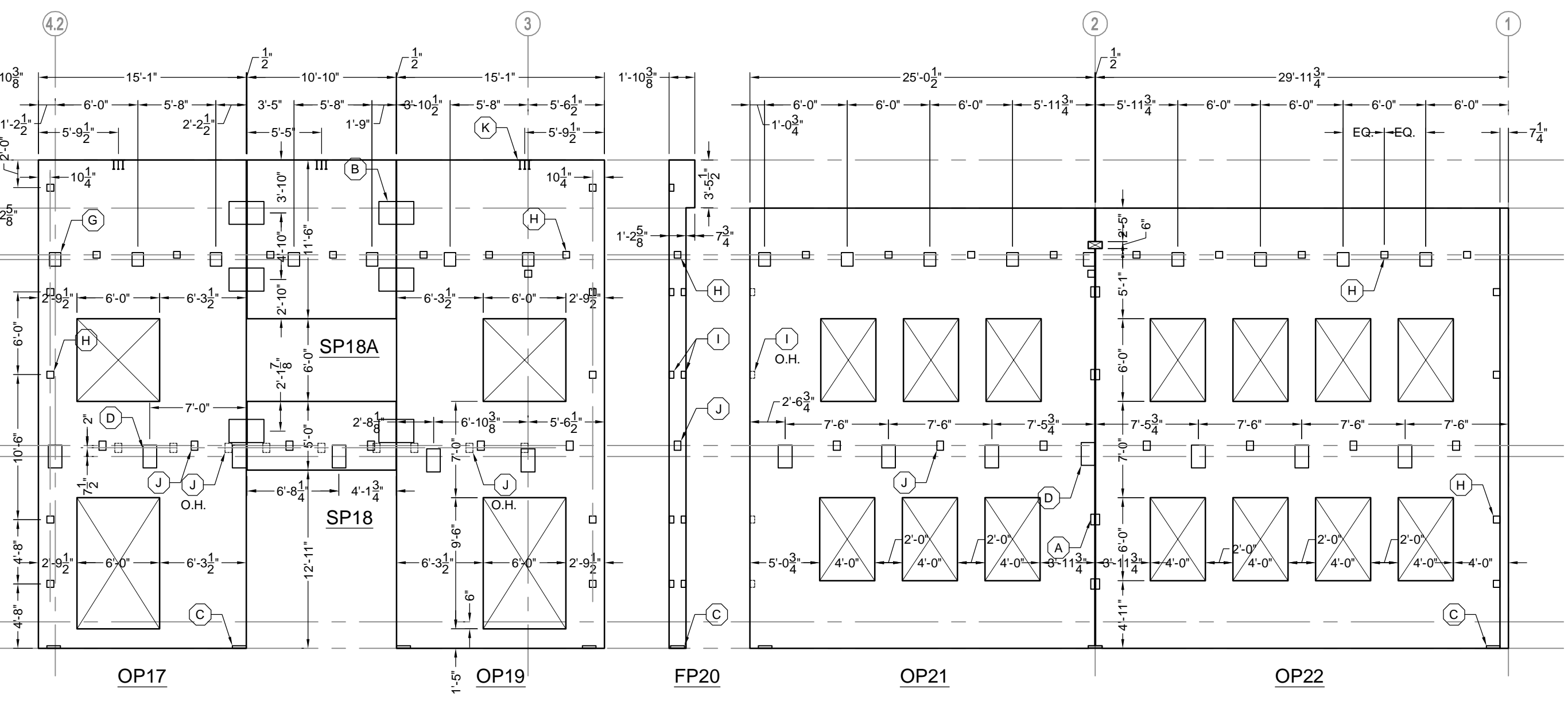
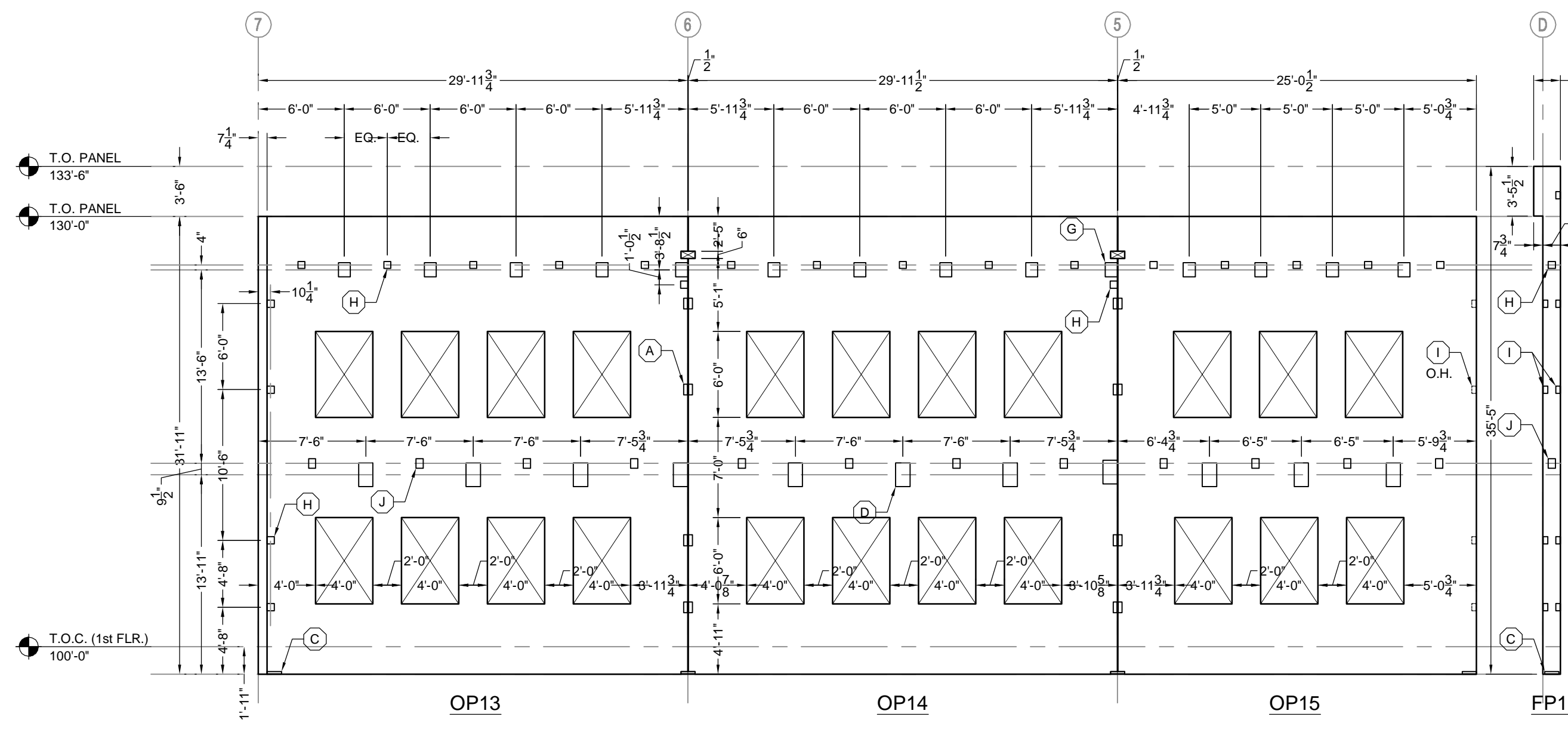
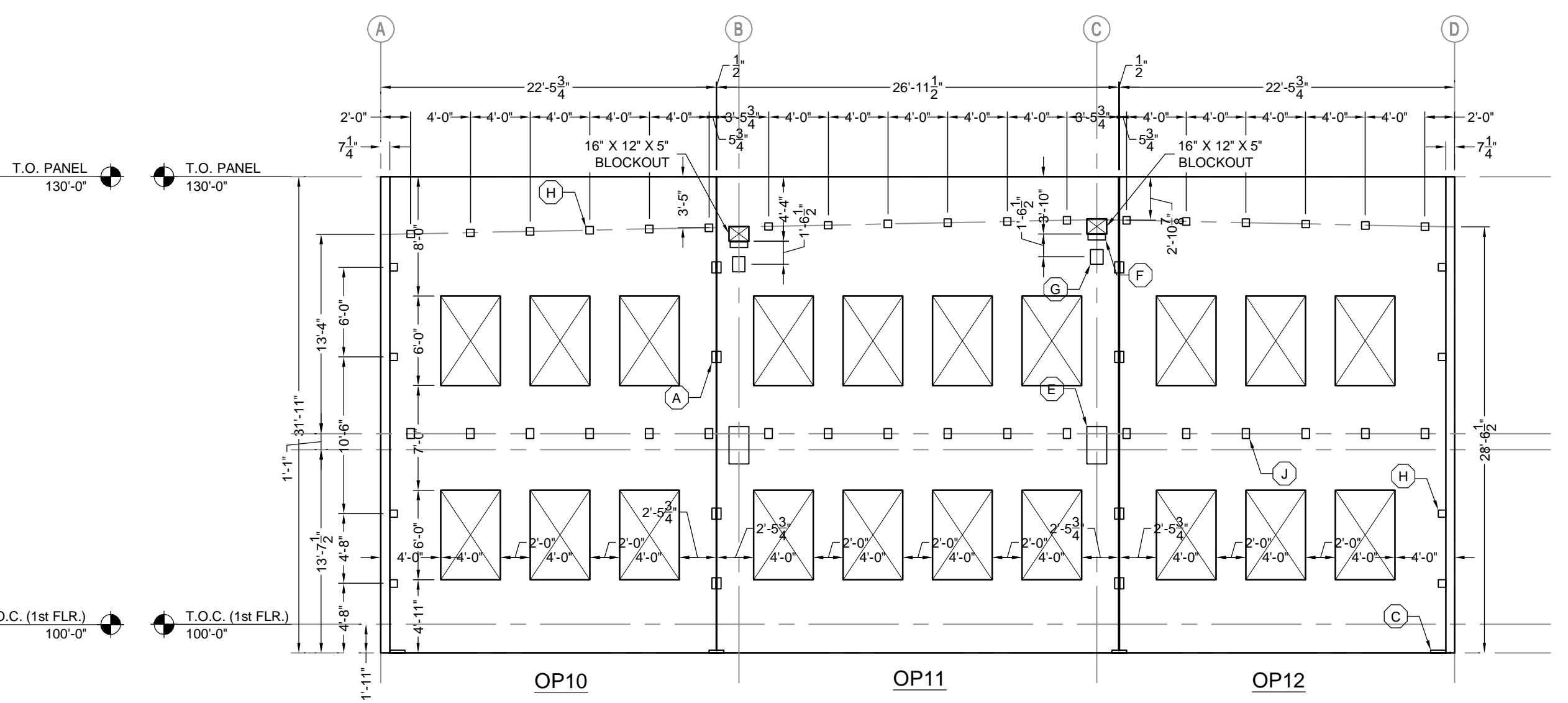
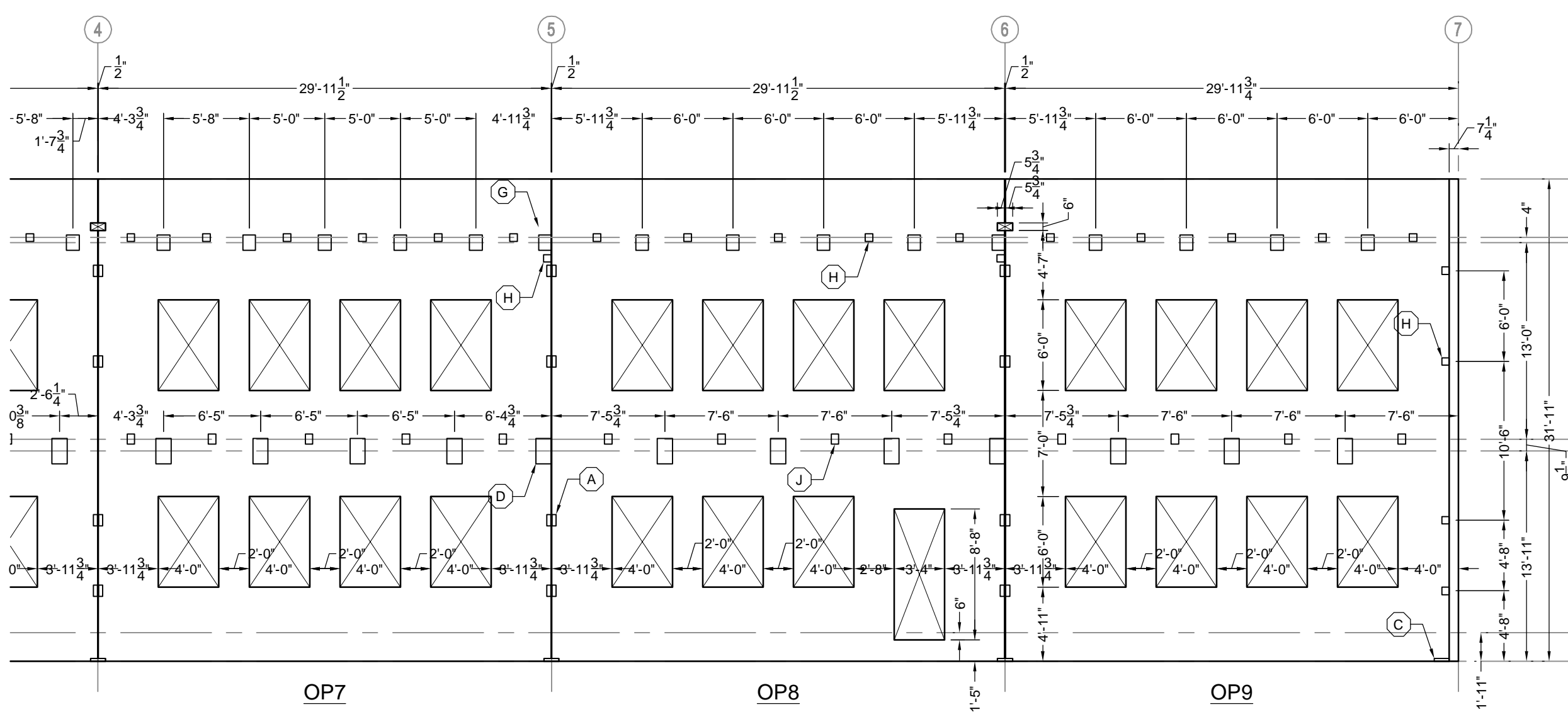


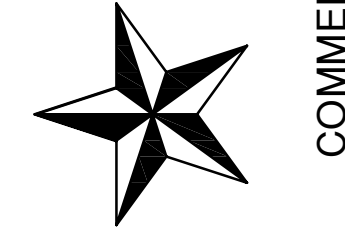
EMBED SCHEDULE	
MARK	DESCRIPTION
A	L 3 1/2" X 3 1/2" X 1/4" X 0-9" W/ (2) 1/2"Ø X 4" HSA
B	PL 1/2" X 1'-3" X 1'-8" W/ (8) 3/4"Ø X 4" HSA
C	C 8 X 11.5 X 1'-0" W/ (3) 1/2"Ø X 8" HSA
D	PL 1/2" X 12" X 1'-8" W/ (8) 3/4"Ø X 4" HSA
E	PL 1/2" X 1'-4" X 2'-6" W/ (15) 3/4"Ø X 4" HSA
F	L 5" X 5" X 1/2" X 1'-2" W/ (4) 3/4"Ø X 4" HSA
G	PL 1/2" X 10" X 1'-0" W/ (4) 1/2"Ø X 4" HSA
H	PL 3/8" X 6" X 6" W/ (2) 1/2"Ø X 4" HSA
I	L 4 X 4 X 1/4" X 0-6" W/ (2) 1/2"Ø X 4" HSA
J	PL 3/8" X 6" X 0-8" W/ (2) 3/4"Ø X 4" HSA
K	PL 1/2" X 6" X 1'-0" W/ (3) 5/8"Ø X 6" HSA

NOTES:
 1. REF. ARCH FOR ALL STANDARD REVEAL LOCATIONS.
 2. TYP. PANEL JOINTS SHALL HAVE A 1/2" DESIGN WIDTH.
 3. REFER TO ARCH FOR TYP. PANEL EDGE TREATMENTS.



6001 W. WILLIAM CANNON
 BLDG. 2, SUITE 203-C
 AUSTIN, TX 78749
 (512) 301-3389 (o)
 (512) 301-3348 (f)

TEXAS
 DESIGN
 INTERESTS, LLC
 AUSTIN • HOUSTON



COMMERCIAL/RESIDENTIAL - CIVIL & STRUCTURAL ENGINEERING

AUSTIN, TEXAS

PANEL ELEVATIONS

PROJECT #
342-100

DATE
07/24/09

SHEET

S7.1